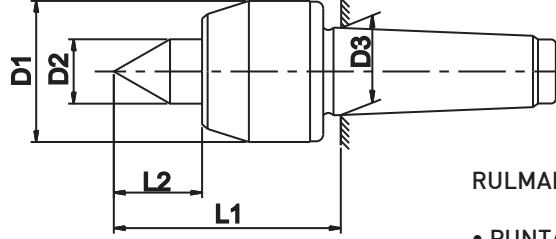


DÖNER PUNTALAR - NORMAL UÇLU

TİP 100



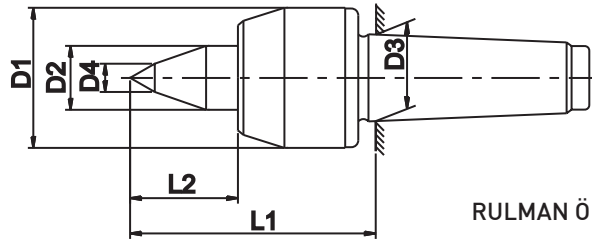
RULMAN ÖMRÜ 2000 İŞ SAATİDİR.

- PUNTA UCU SERTLİĞİ: 60-62 HRC
- SALGI: MAX. 0,008 mm

SİP. NR.	KONİK	D1 (mm)	D2 (mm)	D3 (mm)	L1 (mm)	L2 (mm)	DEVİR d/d (max)	PARÇA AĞIRLIĞI KG (max)	FİYAT KODU
102	MK2	45	20	17.780	65	24	6000	150	00941
103	MK3	60	25	23.825	83	31	4300	300	00942
104	MK4	70	32	31.267	102	40	3500	600	00943
105	MK5	90	40	44.399	129	50	2500	1100	00944
106	MK6	105	50	63.348	151	57	1900	2000	00945

DÖNER PUNTALAR - KOPYE UÇLU

TİP 110



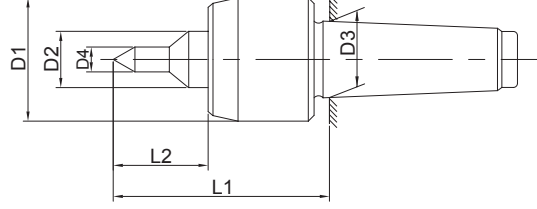
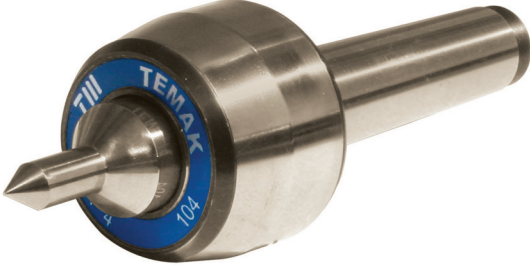
RULMAN ÖMRÜ 2000 İŞ SAATİDİR.

- PUNTA UCU SERTLİĞİ 60-62 HRC
- SALGI: MAX. 0,008mm

SİP. NR.	KONİK	D1 (mm)	D2 (mm)	D3 (mm)	D4 (mm)	L1 (mm)	L2 (mm)	DEVİR d/d (max)	PARÇA AĞIRLIĞI KG (max)	FİYAT KODU
114	MK4	70	32	31.267	12	108	46	3500	450	00946
115	MK5	90	40	44.399	15	135	56	2500	850	00947

DÖNER PUNTALAR - İNCE UÇLU

TİP 120



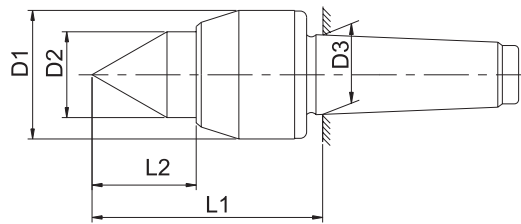
RULMAN ÖMRÜ 2000 İŞ SAATİDİR.

- PUNTA UCU SERTLİĞİ 60-62 HRc
- SALGI: MAX. 0,008 mm

SİP. NR.	KONİK	D1 (mm)	D2 (mm)	D3 (mm)	D4 (mm)	L1 (mm)	L2 (mm)	DEVİR d/d (max)	PARÇA AĞIRLIĞI KG (max)	FİYAT KODU
124	MK4	70	32	31.267	12	102	40	3500	450	00948
125	MK5	90	40	44.399	15	129	50	2500	800	00949

DÖNER PUNTALAR - BÜYÜK MİL ÇAPLI

TİP 150



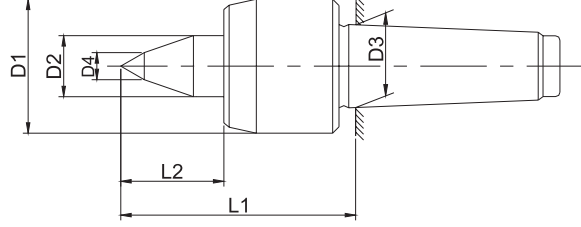
RULMAN ÖMRÜ 2000 İŞ SAATİDİR.

- PUNTA UCU SERTLİĞİ 60-62 HRc
- SALGI: MAX. 0,008 mm

SİP. NR.	KONİK	D1 (mm)	D2 (mm)	D3 (mm)	L1 (mm)	L2 (mm)	DEVİR d/d (max)	PARÇA AĞIRLIĞI KG (max)	FİYAT KODU
154	MK4	70	48	31.267	108	46	3500	600	00950
155	MK5	90	56	44.399	135	56	2500	1000	00951

DÖNER PUNTALAR - CNC TORNALAR İÇİN

TİP 140



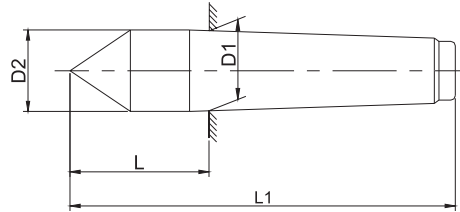
RULMAN ÖMRÜ 2000 İŞ SAATİDİR.

- PUNTA UCU SERTLİĞİ 60-62 HRc
- SALGI: MAX. 0,008 mm

SİP. NR.	KONİK	D1 (mm)	D2 (mm)	D3 (mm)	D4 (mm)	L1 (mm)	L2 (mm)	DEVİR d/d (max)	PARÇA AĞIRLIĞI KG (max)	FİYAT KODU
144	MK4	70	32	31.267	12	102	40	5000	500	00952
145	MK5	90	40	44.399	15	129	50	4000	850	00953

SABİT PUNTALAR - NORMAL UÇLU

TİP 400

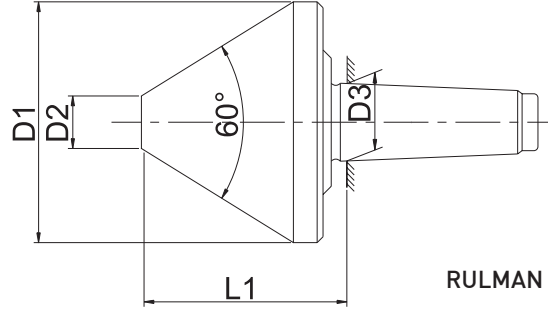
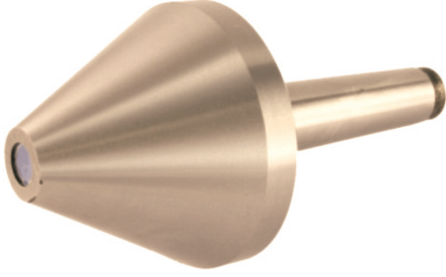


- KOMPLE SERTLEŞTİRİLİP TAŞLANMIŞTIR
- PUNTA UCU SERTLİĞİ 60-62 HRc
- SALGI: MAX. 0,005 mm

SİP. NR.	KONİK	D1 (mm)	D2 (mm)	L (mm)	L1 (mm)	FİYAT KODU
402	MK2	17.780	18	36	100	00954
403	MK3	23.825	24.1	44	125	00955
404	MK4	31.267	31.6	57.5	160	00956
405	MK5	44.399	44.7	70.5	200	00957
406	MK6	63.348	63.8	88	270	00958

BORU PUNTALARI - 60 DERECE UÇ AÇILI

TİP 200



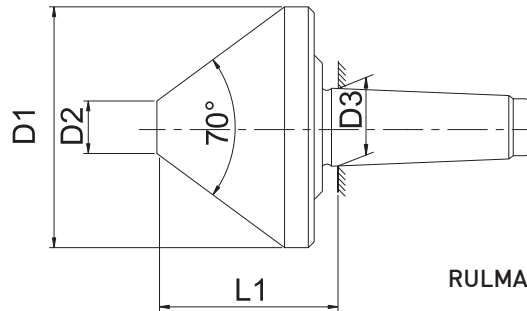
RULMAN ÖMRÜ 2000 İŞ SAATİDİR.

- PUNTA UCU SERTLİĞİ 60-62 HRc
- SALGI: MAX. 0,01 mm

SİP. NR.	KONİK	D1 (mm)	D2 (mm)	D3 (mm)	L1 (mm)	DEVİR d/d (max)	İŞ PARÇASI AĞIRLIĞI KG (MAX.)	FİYAT KODU
203	MK3	80	25	23.825	70	3000	300	00959
213	MK3	100	32	23.825	85	2400	500	00960
204	MK4	120	38	31.267	90	2400	500	00961
205	MK5	120	38	44.399	90	2400	500	00962
224	MK4	140	40	31,267	105	1800	600	00963
225	MK5	140	40	44,399	105	1800	600	00964
215	MK5	170	50	44.399	100	1500	1000	00965

BORU PUNTALARI - 70 DERECE UÇ AÇILI

TİP 210/230



RULMAN ÖMRÜ 2000 İŞ SAATİDİR.

- PUNTA UCU SERTLİĞİ 60-62 HRc
- SALGI: MAX. 0,01 mm

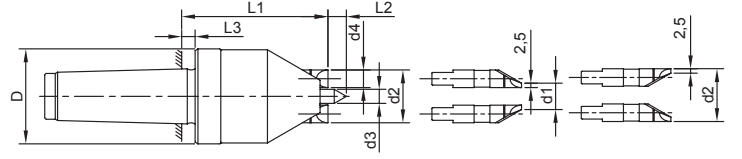
SİP. NR.	KONİK	D1 (mm)	D2 (mm)	D3 (mm)	L1 (mm)	DEVİR d/d (max)	İŞ PARÇASI AĞIRLIĞI KG (MAX.)	FİYAT KODU
235	MK5	200	70	44.399	125	800	1000	00966
216	MK6	250	75	63.348	147	800	1500	00967

TIRNAKLI PUNTALAR - BASMA ÇAPI 15 MM - 30 MM

TİP 320

SALGISI 0,02 mm' YE KADAR AYARLANABİLİR.

MEKANİK KİLİTLEMELİ



3 ADET YEDEK TIRNAK İLE BİRLİKTE TESLİM EDİLİR.

MİL VE TIRNAKLARDA SERTLİK: 60-63 Hrc

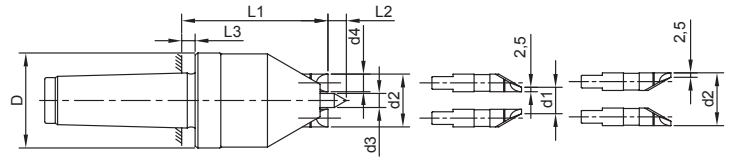
SİP. NR.	KONİK	d1 (mm)	d2 (mm)	d3 (mm)	d4 (mm)	TORNALAMA ÇAPI (mm)		D (mm)	L1 (mm)	L2 (mm)	L3 (mm)	TIRNAK SAYISI	FİYAT KODU
						MİN.	MAX.						
323	MK3	15	30	8	10	16	60	54	80	7,5	5	3+3	00968
324	MK4	15	30	8	10	16	60	54	80	7,5	5	3+3	00969
325	MK5	15	30	8	10	16	60	54	80	7,5	5	3+3	00970

TIRNAKLI PUNTALAR - BASMA ÇAPI 24 MM - 45 MM

TİP 340

SALGISI 0,02 mm' YE KADAR AYARLANABİLİR.

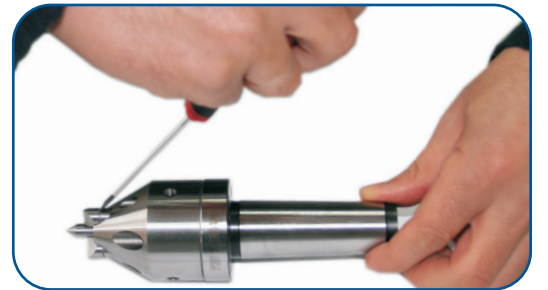
MEKANİK KİLİTLEMELİ



6 ADET YEDEK TIRNAK İLE BİRLİKTE TESLİM EDİLİR.

MİL VE TIRNAKLARDA SERTLİK: 60-63 Hrc

SİP. NR.	KONİK	d1 (mm)	d2 (mm)	d3 (mm)	d4 (mm)	TORNALAMA ÇAPI (mm)		D (mm)	L1 (mm)	L2 (mm)	L3 (mm)	TIRNAK SAYISI	FİYAT KODU
						MİN.	MAX.						
344	MK4	24	45	17	13	25	90	69	94	15	5	6+6	00971
345	MK5	24	45	17	13	25	90	69	94	15	5	6+6	00972



İŞ PARÇASI ÜZERİNDEKİ PUNTA DELİĞİNİN VEYA ALIN PROFİLİNİN DURUMUNA GÖRE BASINÇ BASİT OLARAK AYARLANABİLİR.

TIRNAKLAR VEYA MİLİN DEFORME OLMASI HALİNDE PARÇALAR EKONOMİK VE PRATİK OLARAK DEĞİŞTİRİLEBİLİR.